

SilverArts

Specific Requirements and Subcategories
Rockingham County Senior Games and SilverArts adheres to the guidelines below, set forth by North Carolina Senior Games.

A. HERITAGE ARTS - Basketweaving • China Painting • Crocheting • Jewelry • Needlework • Knitting • Hooked Rugs • Pottery (Thrown and Hand-Built) • Quilting • Stained Glass • Tatting and Needlelace • Weaving • Woodworking • Wood Carving • Tole/Decorative Painting

- ? Entries must be the work of the individual and not a group effort.
- ? Heritage Art entries must be an original work. Patterns may be used, but no stamped pieces will be accepted.
- ? Pottery must be hand built or thrown.



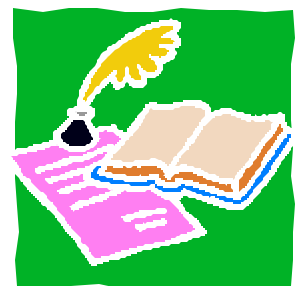
- ? Latch hook rugs and pieces from ceramic molds will not be accepted.
- ? All framed work must be securely wired, ready to be hung (no serrated hooks or strong). Two-dimensional work not properly framed and wired will not be displayed.
- ? Framed works can be no larger than 36" x 42", including matting and frame.
- ? Entries can be no heavier than 50 pounds.
- ? All entries, except framed work, must be able to be displayed in an area 3' (W) x 3' (L) x 5' (Height).
- ? Groupings (sets) shall have no more than 3 separate pieces per set. All objects within each piece of the set must be contained within, or attached to, one of the 3 pieces of the set.
- ? Artist's name and title of entry must appear on, or be attached to, entry for

identification.

- ? Artists entering state finals must send a photograph of entry with *State Finals Entry Form* and *SilverArts Information Form*. Photos cannot be returned.
- ? Entries must be the original work of the artist, must be a work created *after* the artist is age 55, and must have been completed within 2 years of the Local Games' qualifying date.
- ? Artists, or their representatives, must be able to deliver and pick up the entry during the designated times.
- ? The heritage arts piece entered at State Finals must be the same piece that won at the Local Games.
- ? An artist may only submit one (1) entry per sub-category at State Finals.

B. LITERARY ARTS - Essays • Life Experiences (autobiographical) • Poems (Inspirational, Narrative, Lyric/Personal) • Short Stories

- ? Literary Arts entries must be submitted with the Local Games Registration Form.
- ? All Literary Arts entries must be typed, double-spaced, on 8½ x 11-inch paper and have a minimum of one-inch margins. Minimum font size allowed is 10-point type.
- ? Poems can be no longer than 40 lines and must be typed.
- ? Short stories, essays, and life experiences can be no longer than 8 pages.
- ? All entries must have a title page that includes title of work, sub-category, and name of artist.
- ? Artist's name should not appear on the content pages.
- ? A *display-quality copy* of the winning Literary Arts entries, and three (3) additional photocopies, should be submitted to NCSG by the winning artist with their official *State Finals Entry Form* and *SilverArts Information Form*. No framed or matted entries will be accepted.
- ? All copies will be retained by Rockingham County Senior Games and SilverArts.
- ? Entries must be the original work of the artist, must be a work created *after* the artist is age 55, and must have been completed within 2 years of the Local Games' qualifying date.
- ? The literary arts piece entered at State Finals must be the same piece that won at the Local Games.



(Continued)

C. PERFORMING ARTS - Comedy/Drama • Dance • Instrumental • Vocal • Line Dance

- ? An artist may only have one (1) entry per size of Act in each sub-category.
- ? Performing entries are limited to three (3) minutes of on-stage time. Exceeding the time limit will result in automatic disqualification. Timing begins with the first note of music or the first movement visible to the audience and ends with the exit of the last performer from the stage or final movement of the act.
- ? Performing entries may be one of the following: (a) soloists, (b) small groups (2-4 performers), or (c) large groups (5 or more performers). **Accompanist(s) will be counted** to determine size of the act.
- ? No one under age 55 will be permitted on stage and accompanist(s) must be registered participant(s)
- ? All performers for all acts must enter stage right and exit stage left or begin and end on the stage. See the SilverArts Manual for a stage diagram.
- ? If a cassette tape or compact disc is used, artist/group leader must provide to NCSG by August 1 (with State Finals Entry Form and *SilverArts Information Form*) a high-quality cassette tape or compact disc for performance, with music at the beginning of tape/disc. No recorded instruction is permitted on the tape. Artists should pick up their tape/compact disc after the performance – they will not be mailed/returned. Their music/song should be the only music on the tape.
- ? At State Finals, NCSG can provide the following items: Microphone(s), Piano, Cassette Player, Compact Disc Player. The act is responsible for all other props (including music stands, chairs, etc.) and must get NCSG advance approval for use at Show.
- ? Voice presentations must be a live performance by the artist. Background music can be taped. Lip-synch is not permitted as a performing art.
- ? The Group Leader must be a participant and complete the *SilverArts Information Form* for the group and submit it with *State Finals Entry Form*, and each member of the group must submit their own personal *State Finals Entry Form* by the August 1 deadline.
- ? The performance at State Finals must be the same performance that won at the Local Games (i.e., same songs, dance, music, etc.)
- ? No live animals are allowed in an act except for service animals.



D. VISUAL ARTS – Acrylics • Drawing • Mixed Media • Oil • Pastels • Photography • Sculpture • Watercolors • Charcoal

- ? All art work, except sculpture, must be framed, securely wired, and ready to be hung (no serrated hooks or string). Art work, except sculpture, not properly wired will not be displayed.
- ? Art work, except sculpture, can be no larger than 36" x 42", including matting and frame.
- ? Entries can be no heavier than 50 pounds.
- ? Sculpture groupings (sets) may have no more than 3 pieces per grouping (set).
- ? Mixed media may be a freestanding piece.
- ? Freestanding entries must be able to be displayed in an area 3' (W) x 3' (L) x 5' (Height).
- ? Entries must be the original work of the artist, must be a work created *after* the artist is age 55, and must have been completed within 2 years of the Local Games' qualifying date.
 - ? Artists, or their representatives, must be able to deliver and pick up the entry during the designated times.
 - ? If on-site assembly is required, details must be specified on the Information Form for NCSG prior approval.
 - ? The art piece must be an original work, not a print.
 - ? Artist's name and title of entry must appear on, or be attached to, entry for identification.
 - ? Artist must send a photograph of entry with *State Finals Entry Form* and *SilverArts Information Form*. Photos cannot be returned.
- ? The visual arts piece entered at State Finals must be the same piece that was the winning entry in the local games.
- ? An artist may only submit one (1) entry per sub-category at State Finals.

